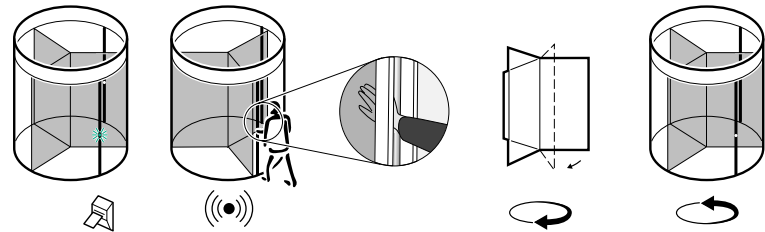


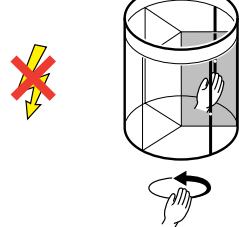
Safety- and users instructions

A. The Tourlock 120/22 safety devices

1 Safety Rail Bent wall (SRB)

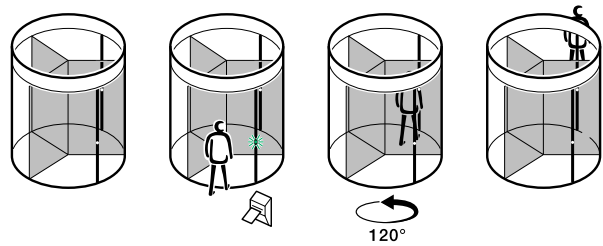


2 Failsafe

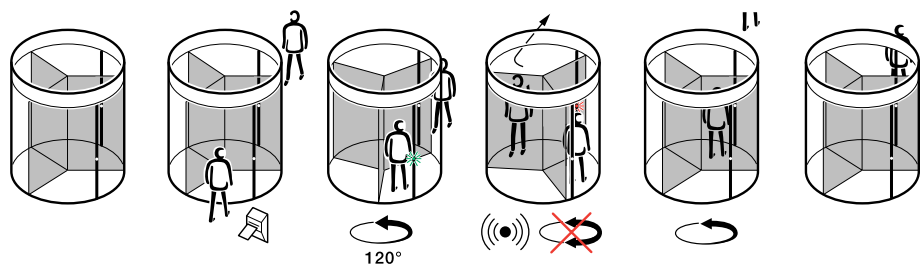


B. The working principles of the Tourlock 120/22 with card reader system

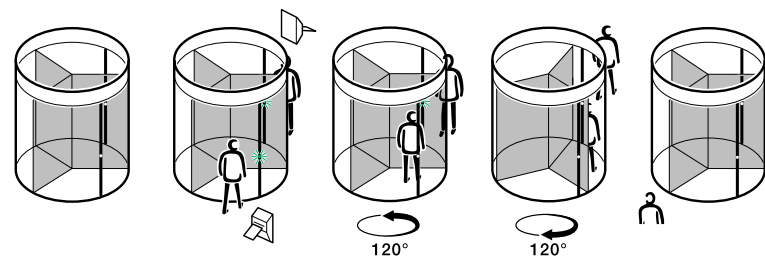
1 One authorized user



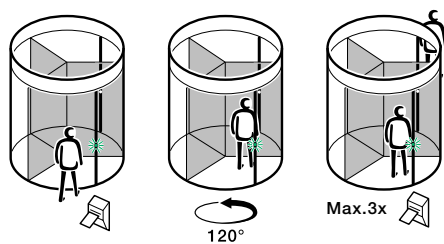
2 One authorized user (from secured side) and one unauthorized user (from non secured side) or the opposite



3 Two authorized users (from secured and non secured side)

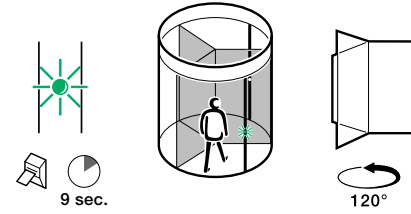


4 Two successively authorized users (from one side)

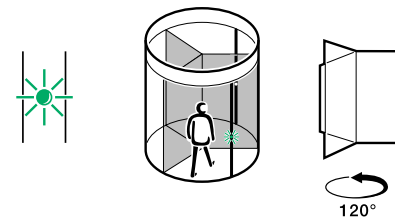


C. The signallamps on the Tourlock 120/22

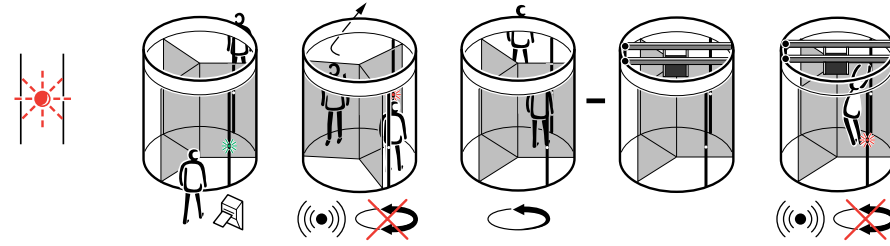
1 Green illuminates (after card reader use)



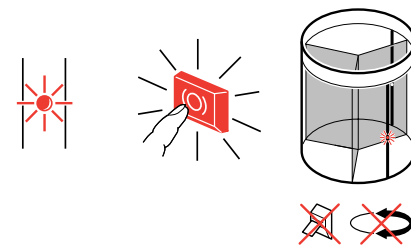
2 Green illuminates continuously



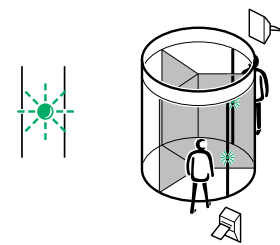
3 Red flashes



4 Red illuminates continuously

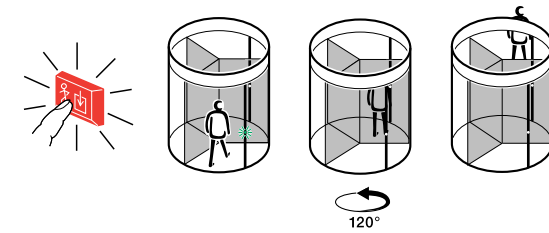


5 Green flashes

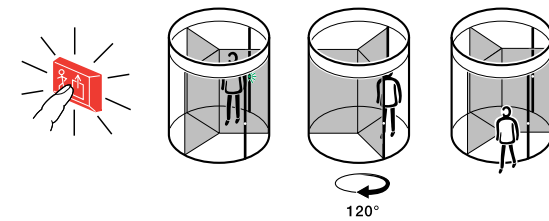


Control panel*

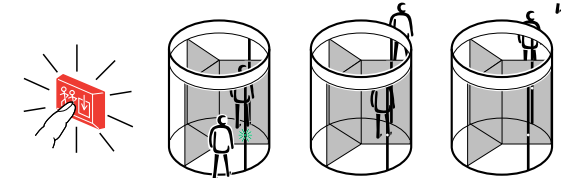
1 One person in



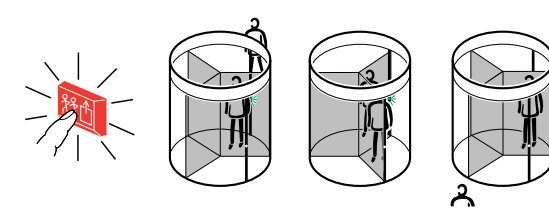
2 One person out



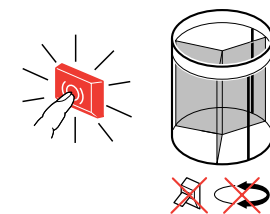
3 Free in



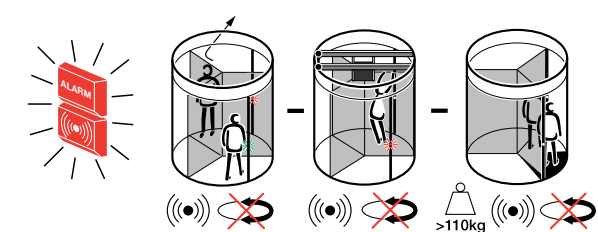
4 Free out



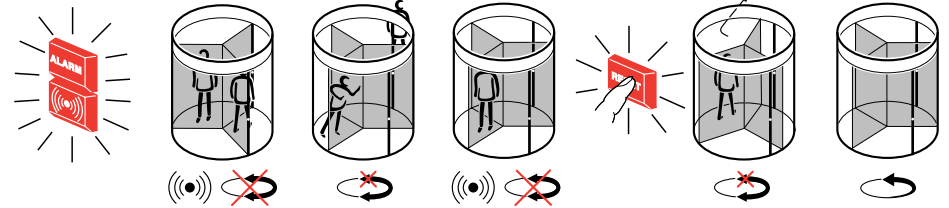
5 Locking



6 Alarm/ Buzzeralarm



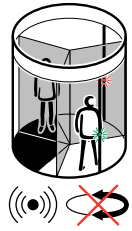
7 Reset



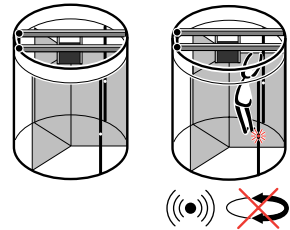
Instructioncard Tourlock 120/22

Security devices

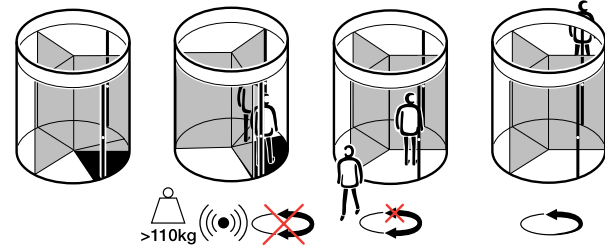
1 Blockingmat



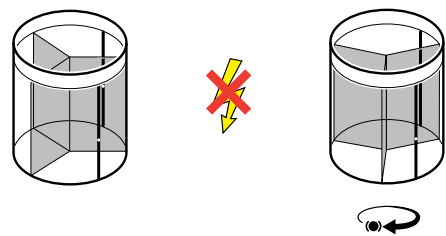
2 Hangsensor*



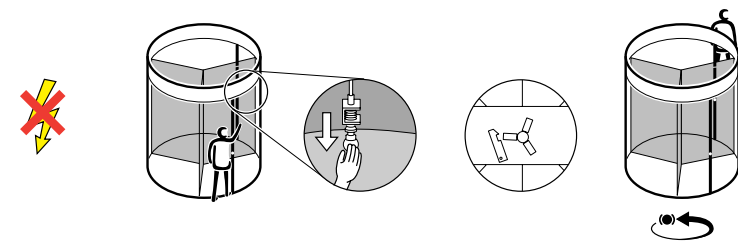
3 Weightsensor*



4 Failsecure*



5 Failsecure + emergency unlocking*



Maintenance

Caution! Warning!

Don't use water near the drive- units and controlboxes.
Switch OFF the power supply of the Tourlock 120/22 during maintenance or other work.

Weekly:

Clean the anodised, stove enamelled and/or stainless steel surfaces with a wet cloth.

Monthly:

Clean the anodised, stove enamelled and/or stainless steel surfaces with a wet cloth and a non- aggressive soap.
Vacuum clean all the brushes.

Yearly:

The Tourlock 120/22 needs a major maintenance check once a year. This has to be done by Boon Edam B.V. or your agent. This applies as well for repairs.

Safety- and users instructions

Control panel*

Security devices

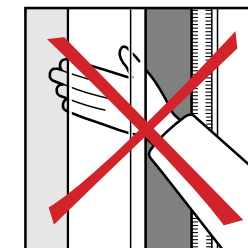
Maintenance

Explanation of the symbols

	Secured side		Non secured side	
	Doorset rotates 120° ACW			Max. admissible weight of 110 kg, (Weightsensor)
	Doorset rotates 120° CW			Authorization after using card reader
	Doorset rotates manually			3x Authorization at most after using card reader
	Doorset will be blocked in the failsecure mode			Passage possible within 9 seconds
	Doorset completes 120°-cycle ACW			No power supply
	Doorset reverses CW			Acoustic signal
	Doorset is locked		*	Option



Check the emergency- and safety devices and the general function of the Tourlock 120/22 daily!



Dealer

For further information: consult the operating manual.