



# SDA-04 AUTOMATION

THE METAFLEX SDA-04 AUTOMATION  
FOR SLIDING DOORS



UNIVERSAL  
MICROPROCESSOR  
CONTROLLED  
AUTOMATION FOR  
SLIDING DOORS

**The Metaflex SDA-04 automation for sliding doors**

Metaflex Isosystems is an experienced industrial door manufacturer who markets a wide range of hermetically sealing sliding doors, and now introduces a universal microprocessor controlled automation. Especially designed to suit the various needs of hermetic closure. An automation combining the power of lifting the door blade out of the track indentations, with the smooth and silent sliding in all movements. Its reliability and functionality has been proven over the years on thousands of hermetically sealing sliding doors, and now for the first time it is available for anyone desiring a smooth operator for a door unit.

The SDA-04 is a microprocessor-regulated controller developed by Metaflex to particularly suit the requirements of operating hermetically sealing sliding doors. The versatile set-up of the system enables you to operate almost any door with ease, whatever the weight or size.

The design incorporates a high level of user-friendliness and safety. An automation exceptionally suitable in situations where high requirements are made in respect of areas being locked, interlocked, interconnected, air hierarchy plays a role, air tightness comes into play, or when cleanliness, durability and reliability are absolutely necessary!





## Applications

SDA-04 automation. specially designed for indented tracks, used on hermetically sealing sliding doors for hospitals, pharmaceutical, and food processing industry, such as :

- operation theatres
- clean rooms
- over, - and under pressurized rooms
- chiller,- and freezing rooms

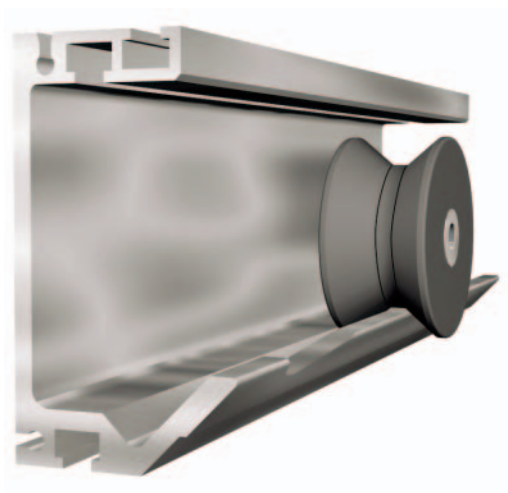
An unique system, which works with high torque for lifting even the heaviest door blades out of indented trackprofiles.

## Standard possibilities

- single phase power supply
- electrically overtaking manual activated door movements
- special fire door provisions
- electric motor blocking in case of an energized system
- interlocking function between 2 electrically operated sliding doors
- simple manual door operation in case of power failure
- controller incorporates all necessary switching options, without the need for extra modules
- suitable for bi-parting sliding doors, with a single electric motor

## User friendly installation

After mechanical installation, the system requires setting of the DIN position and the assumed door blade weight and sliding resistance, afterwards it regulates itself and detects the track and end points. Settings for switching disciplines and user options can be made via the display on the controller unit. The latter unit has a self guarding system with failure indication linked to code numbers which on their turn will be shown in the display of the control unit.



## Two versions

A 90 Watt version to suit door blade weights up to 250 kgs, and a 370 Watt version to suit door blade weights up to 450 kgs.

It is important to note that we deal with a specially designed hermetic door automation, which means that the operator has to be powerful enough to lift the entire door blade weight out of the track indentations and then smoothly slide the door open and closed. It is precisely this apparent contradiction between power on the one hand and smooth sliding on the other that causes failures and undesirable limitations in all regular automations dealing with a straight rail.

## SDA-04 can be applied to any rail system

Probably the most important feature of the SDA-04 is its universal applicability. Given only a few minor adaptations the SDA-04 will perfectly suit any rail system intended to run a hermetically sealing door unit. A characteristic which opens a window of opportunities for;

- sliding door manufacturers that are not in the possession of a suitable automation.
- sliding door manufacturers that are not happy with their current automation because of too many failures, high pricing or not enough versatility in options and output performance.
- panel manufacturers who want to extend their range of service and products.
- organisations that manufacture automations for a straight rail to extend their product range.



## SDA-04 automation packages

### Package 1

A full operational set on all Metaflex sliding doors, be it acoustic-, hygienic-, radiation-, or fire retarding sliding doors.

### Package 2

Operator set consisting of controller, drive unit and photo cell, for door manufacturers, panel manufacturers in need of door automation, and any interested third party.

### Package 3

Complete retrofit assembly package for existing door tracks from internationally known brands.

### Package 4.

Automation in combination with the Metaflex track system. In this option the door blade itself is excluded.

## Why choose the SDA-04 sliding door automation?

- It is easy to install and 100% plug and play.
- Intelligent, versatile, and yet of simple design.
- Versatile in the sense that it suits almost any track system.
- Being micro-processor regulated it automatically adapts its operating force to the sliding characteristics of each door irrespective of make of door blade or track.
- Smooth and silent sliding characteristics.
- Its standard safety features comply with most international safety standards concerning automated doors (CE marked).
- Programmable controller incorporating a full range of door operator switching logics, applicable in hygienic and food industry environment.
- Provides interlocking possibilities with sliding and with hinged doors.



Metaflex Isosystems  
P.O. Box 300  
7120 AH Aalten  
Ambachtstraat 11  
7122 MP Aalten  
The Netherlands  
T +31 (0)543 477 333  
T +31 (0)543 477 222  
E [sales@metaflex.nl](mailto:sales@metaflex.nl)  
I [www.metaflex.nl](http://www.metaflex.nl)