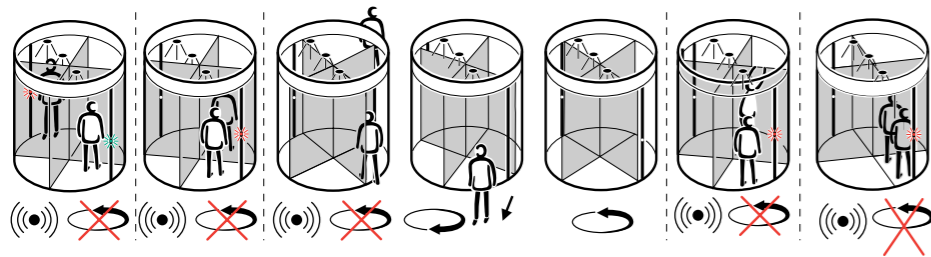


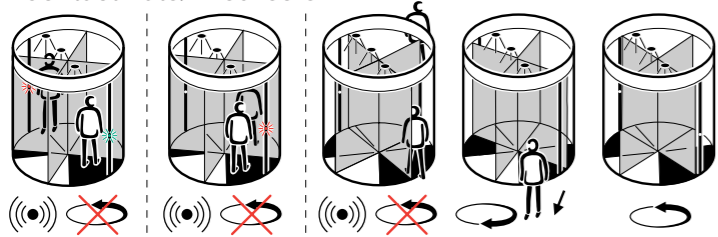
Instructioncard Tourlock 180+90

Security devices

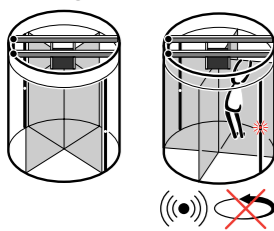
1 StereoVision*



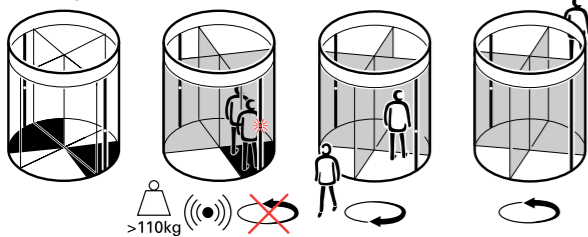
2 Contactmats/IR sensors*



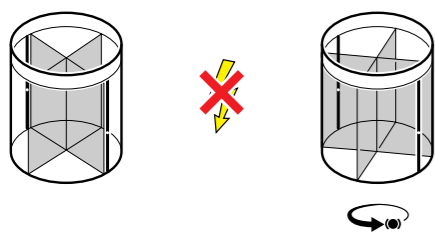
3 Hangsensor*



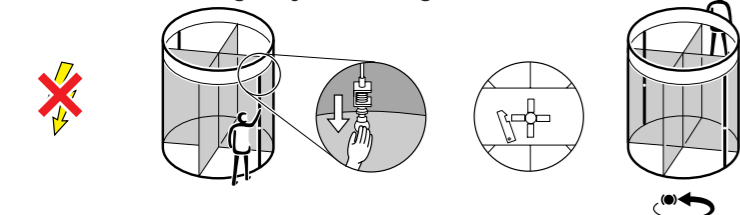
4 Weightsensor*



5 Failsecure*



6 Failsecure+ emergency unlocking*



Maintenance

Caution!

Don't use water near the drive units and controlboxes.

Warning!

Switch OFF the power supply of the Tourlock 180+90 during maintenance or other work.

Daily:

Check daily the functionality of the Tourlock 180+90.

Weekly:

Clean the anodised, stove enamelled and/or stainless steel surfaces with a wet cloth.

Monthly:

Clean the anodised, stove enamelled and/or stainless steel surfaces with a wet cloth and a non aggressive soap. Vacuum clean all the brushes.

Yearly:

The Tourlock 180+90 needs a major maintenance check once a year. This has to be done by Boon Edam B.V. or approved agents. This applies as well for repairs.

Safety- and users instructions

Control panel*

Security devices

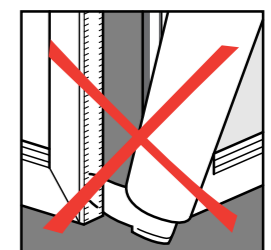
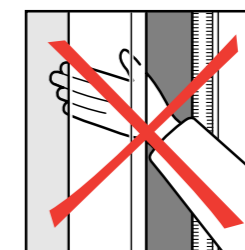
Maintenance

Explanation of the symbols

	Secured side		Non secured side
	Doorset rotates 180°		Authorization
	Doorset completes 180°-cycle		Max. 3 Authorizations
	Doorset rotates manually		Passage possible within 9 seconds
	Doorset will be blocked in the failsecure mode		No power supply
	Doorset reverses		Acoustic signal
	Doorset is locked		Option
	Max. admissible weight of 110kg, (Weightsensor)		Camera



Check the emergency- and safety devices and the general function of the Tourlock 180+90 daily!



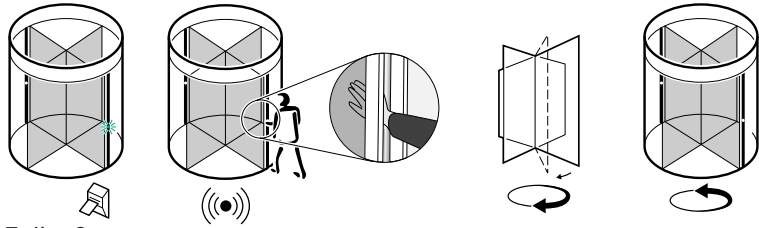
Dealer

For further information: consult the operating manual.

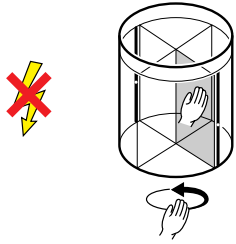
Safety- and users instructions

A. The Tourlock 180+ 90 safety devices

1 Safety Rail Bent wall (SRB)

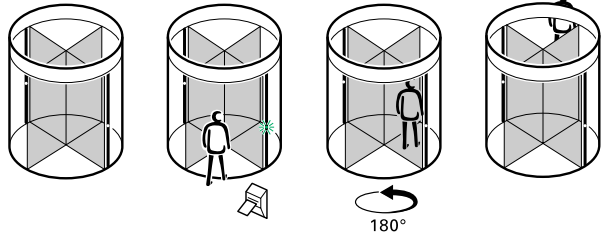


2 Failsafe

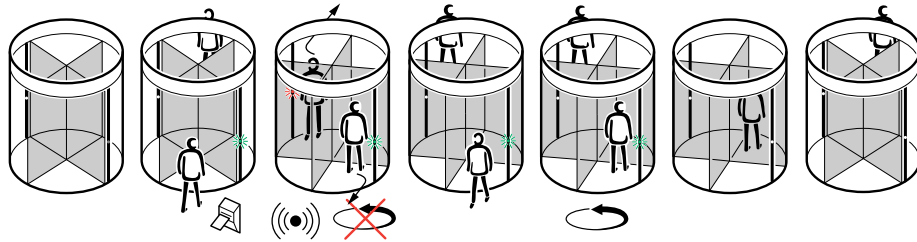


B. The working principles of the Tourlock 180+ 90 with authorisation system

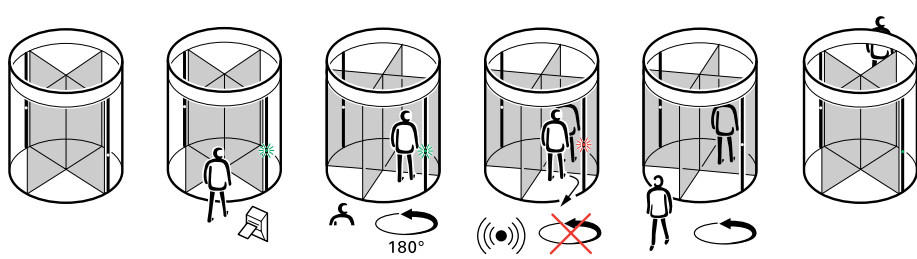
1 One authorized user



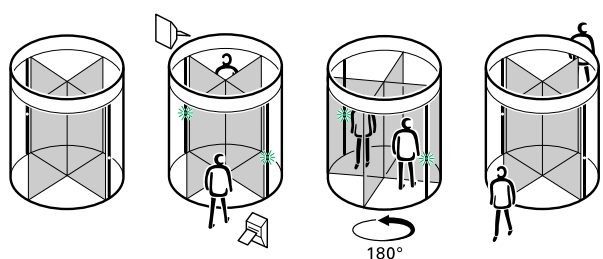
2 One authorized user (from secured side) one unauthorized user (from non secured side) or the opposite



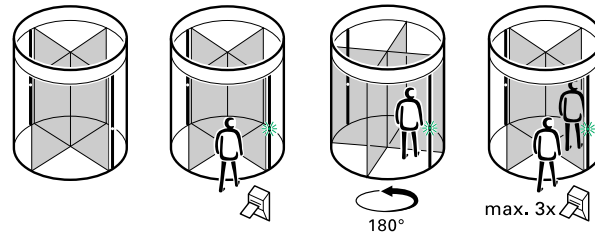
3 One authorized user and one unauthorized user, from one side



4 Two authorized users (from secured and non secured side)

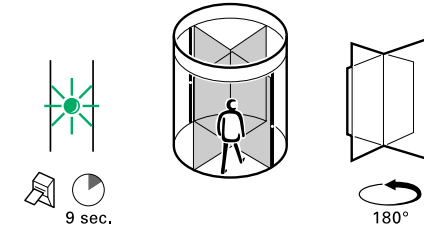


5 Two successively authorized users (from one side)

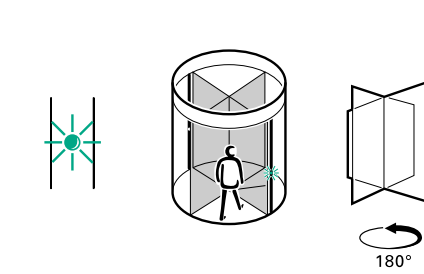


C. The signallamps on the Tourlock 180+ 90

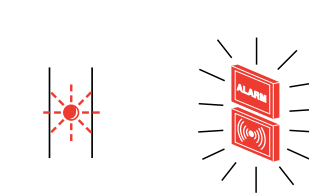
1 Green illuminates (after authorisation)



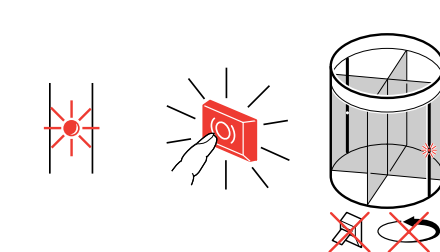
2 Green illuminates continuously (when free entry or exit is enabled)



3 Red flashes (in all alarm situations and sensor activations)

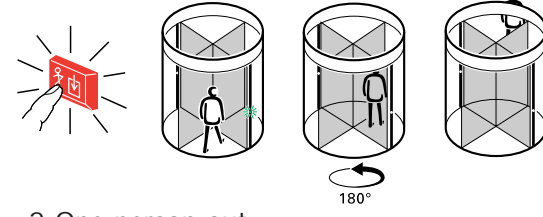


4 Red illuminates continuously

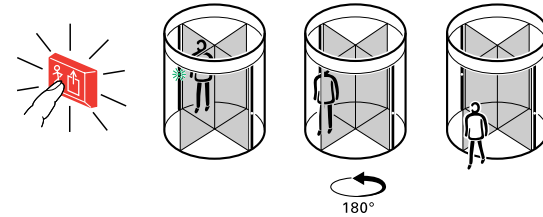


Control panel*

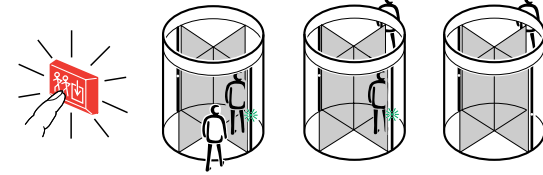
1 One person in



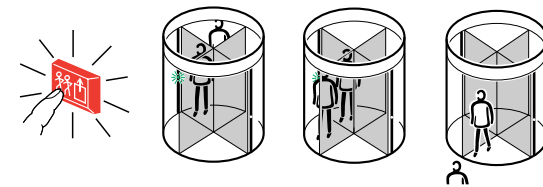
2 One person out



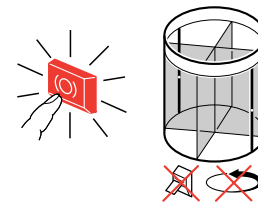
3 Free in



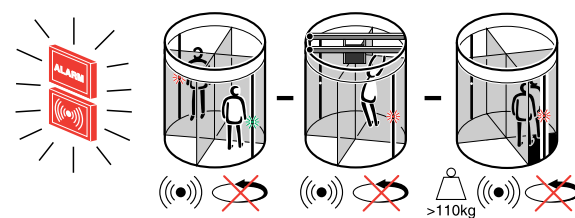
4 Free out



5 Locking (possible in all positions)



6 Alarm/Buzzeralarm (in all alarm situations and sensor activations)



7 Reset

